



301 N. Hillcrest
Sulphur Springs, TX 75482

2000 I-30 E
Greenville, TX 75402

108 W. Marble
Wylie, TX 75098

Thursday, December 26, 2019

Office of Hopkins County Judge
PO Box 288
Sulphur Springs TX 75483

Farmers Electric Cooperative Member: ANGELA CHELBERG
Service Order Number: 1910005742

Greetings:

Farmers Electric Cooperative, Inc. is requesting permission to construct electrical power distribution facilities which will cross County Road 3530 which is located 590' northwest of CR 3532 in Hopkins County, Texas.

Site location map and construction sketches are enclosed. The construction sketch details the proposed work. All road crossings will have a minimum vertical clearance of 22 feet.

If you have any questions, please contact me at any time.

Sincerely,

Matthew Walker
Project Coordinator
mwalker@farmerselectric.coop
Phone 903-441-1368

Submitted by Brandon Darrow
bdarrow@farmerselectric.coop
Field Engineering Coordinator

Enclosures

County Approval Section:

Approved: Denied:

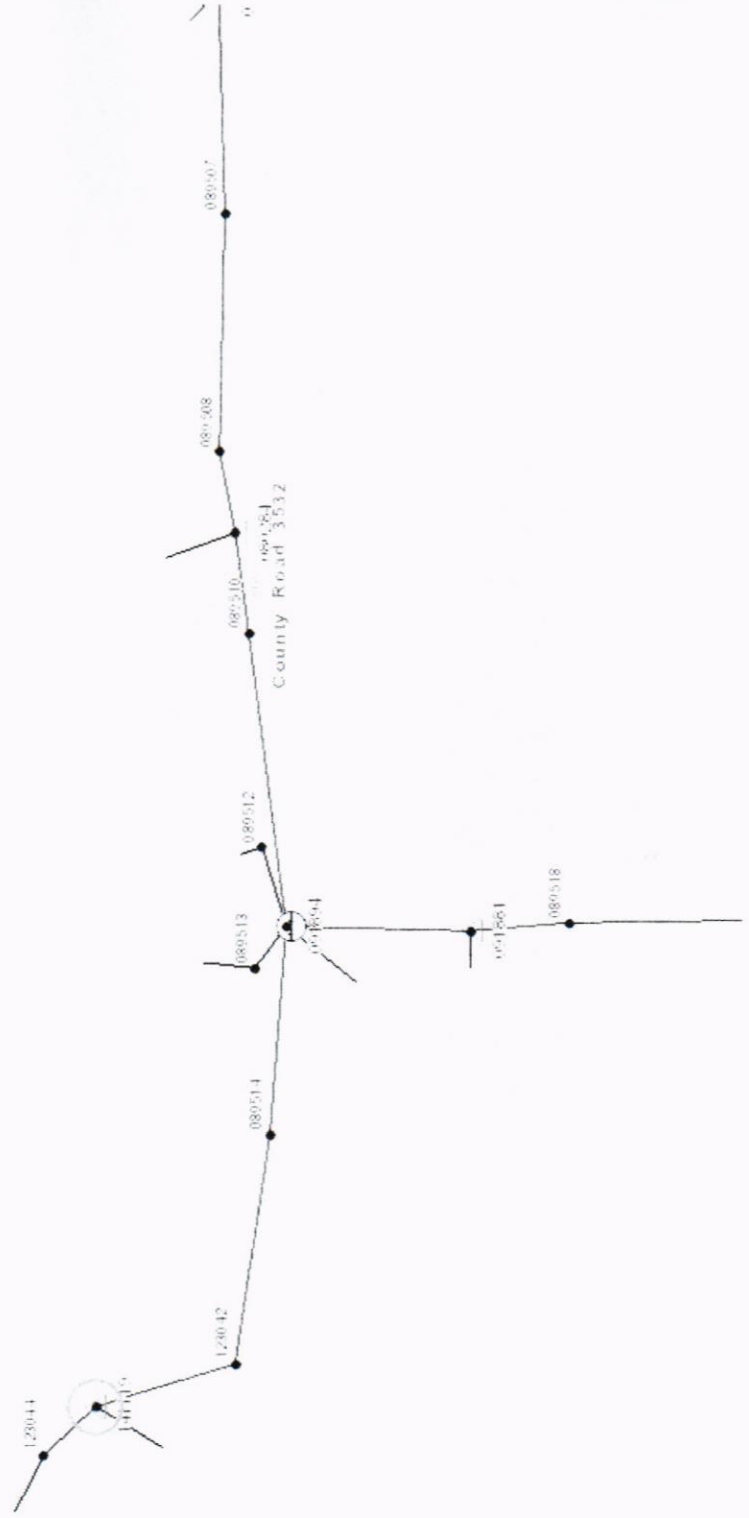
Authorized Signature: *Wade Bentley* Date: 12-27-19

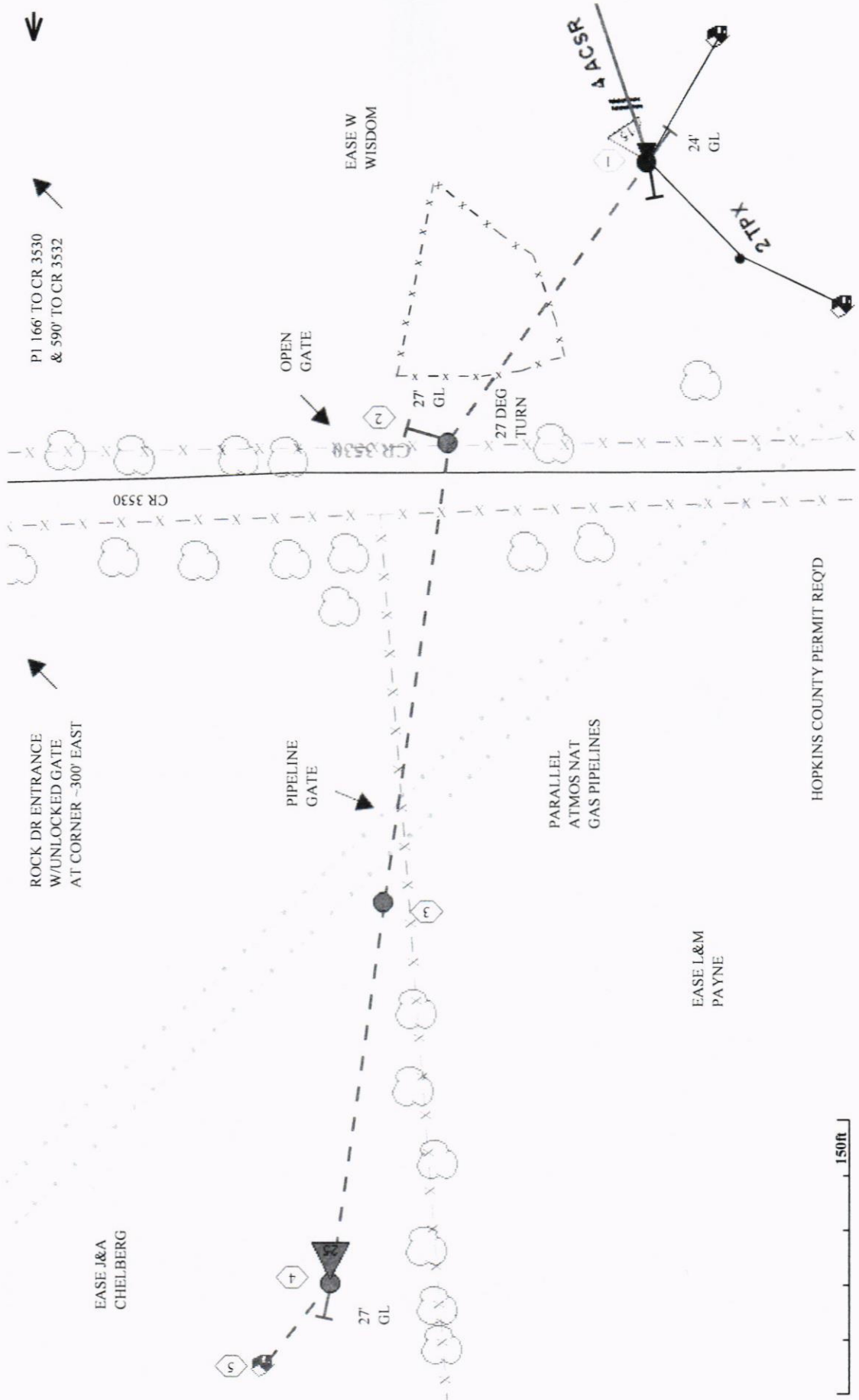
Angela Chelberg
Service Order#
1910005742
Cross CR 3530 in
line with pole#
123043.



County Road 3530

nty Road 3530





P1 166' TO CR 3530
& 590' TO CR 3532

ROCK DR ENTRANCE
W/UNLOCKED GATE
AT CORNER ~300' EAST

EASE J&A
CHELBERG

PIPELINE
GATE

EASE W
WISDOM

OPEN
GATE

PARALLEL
ATMOS NAT
GAS PIPELINES

EASE L&M
PAYNE

HOPKINS COUNTY PERMIT REQ'D

150ft

